



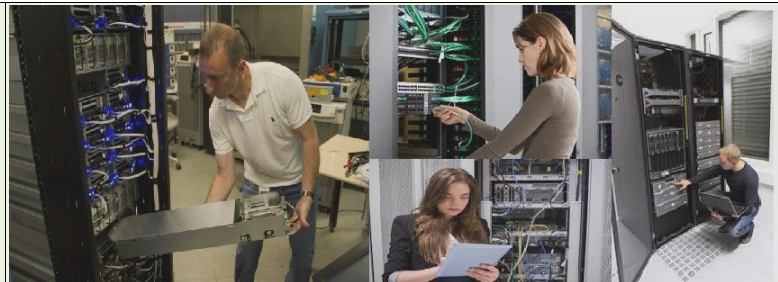
THE NETHERLANDS HEAD OFFICE

J.C. Gracomm International B.V
laarderweg 77 3755AM Eemnes The Netherlands
Tel: +31637384050

Email Id: contact@jcgracomm.com

Website: www.jcgracomm.com

Website: www.jcgracomm.in



INDIA

BRANCH OFFICE

J.C. Gracomm International Pvt. Ltd.
C-28 ,Sector 2,Next to Nirulas, Noida 201301
Tel: 0120 4116260
Cell: +91 9818589342

Email Id: contact@jcgracomm.com

Website: www.jcgracomm.in

Red Hat System Administration I - RH124

Course Contents:

- ❖ Introduction and Access the command line
 - ✓ Log in to a Linux system and run simple commands using the shell.
- ❖ Manage files from the command line
 - ✓ Copy, move, create, delete, and organize files from the bash shell prompt.
- ❖ Get help in Red Hat Enterprise Linux
 - ✓ Resolve problems by using online help systems and Red Hat support utilities.
- ❖ Create, view, and edit text files
 - ✓ Create, view, and edit text files from command output or in an editor.
- ❖ Manage local Linux users and groups
 - ✓ Manage local Linux users and groups, and administer local password policies.
- ❖ Control access to files with Linux file system permissions
 - ✓ Set Linux file system permissions on files and interpret the security effects of different permission settings.

- ❖ Monitor and manage Linux processes
 - ✓ Obtain information about the system, and control processes running on it.
- ❖ Control services and daemons
 - ✓ Control and monitor network services and system daemons using system.
- ❖ Configure and secure OpenSSH service
 - ✓ Access and provide access to the command line on remote systems securely using OpenSSH
- ❖ Analyze and store logs
 - ✓ Locate and accurately interpret relevant system log files for troubleshooting purposes.
- ❖ Manage Red Hat Enterprise Linux networking
 - ✓ Configure basic IPv4 networking on Red Hat Enterprise Linux systems.
- ❖ Archive and copy files between systems
 - ✓ Archive files and copy them from one system to another.
- ❖ Install and update software packages
 - ✓ Download, install, update, and manage software packages from Red Hat and yum package repositories.
- ❖ Access Linux file systems
 - ✓ Access and inspect existing file systems on a Red Hat Enterprise Linux system.
- ❖ Use virtualized systems
 - ✓ Create and use Red Hat Enterprise Linux virtual machines with KVM and libvirt.