



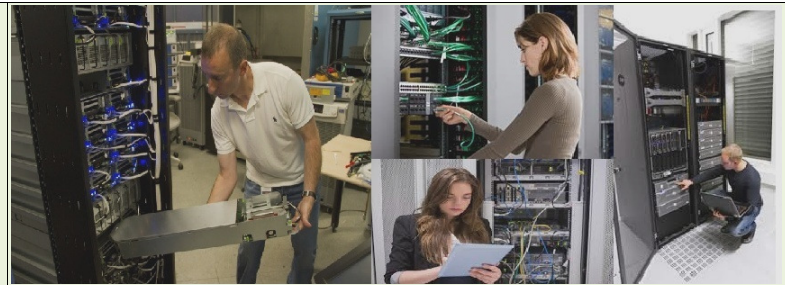
THE NETHERLANDS HEAD OFFICE

J.C. Gracomm International B.V
laarderweg 77 3755AM Eemnes The Netherlands
Tel: +31637384050

Email Id: contact@jcgracomm.com

Website: www.jcgracomm.com

Website: www.jcgracomm.in



INDIA BRANCH OFFICE

J.C. Gracomm International Pvt. Ltd.
C-28 ,Sector 2,Next to Nirulas, Noida 201301
Tel: 0120 4116260
Cell: +91 9818589342

Email Id: contact@jcgracomm.com

Website: www.jcgracomm.in

VMware Certified Professional 5.X – Data Center Virtualization (VCP5.5-DCV)

Course content

Course Introduction

- ✓ Introductions and course logistics
- ✓ Course objectives

Software-Defined Data Center

- ✓ Introduce virtualization and vSphere components
- ✓ Explain the concepts of server, network, and storage virtualization
- ✓ Describe where vSphere fits into the cloud architecture
- ✓ Install and use vSphere user interfaces
- ✓ Describe the ESXi architecture and configure various ESXi settings

Creating Virtual Machines

- ✓ Introduce virtual machines, virtual machine hardware, and virtual machine files
- ✓ Deploy a single virtual machine

VMware vCenter Server

- ✓ Introduce vCenter Server Appliance
- ✓ Install and configure vCenter Server Appliance
- ✓ Using the VMware vSphere Web Client
- ✓ Configuring VMware vCenter Single Sign-On
- ✓ Manage vCenter Server inventory objects and licenses

Configuring and Managing Virtual Networks

- ✓ Describe, create, and manage a standard switch
- ✓ Describe and modify standard switch properties
- ✓ Describe the NIC teaming of a standard switch port group

Configuring and Managing Virtual Storage

- ✓ Introduce storage protocols and device names
- ✓ Configure ESXi with iSCSI, NFS, and Fibre Channel storage
- ✓ Create and manage VMware vSphere VMFS datastores
- ✓ Introduce VMware Virtual SAN datastores

Virtual Machine Management

- ✓ Use templates and cloning to deploy virtual machines
- ✓ Modify and manage virtual machines
- ✓ Create and manage virtual machine snapshots
- ✓ Perform VMware vSphere vMotion and VMware vSphere Storage vMotion migrations
- ✓ Create a VMware vSphere vApp

Access and Authentication Control

- ✓ Control user access through roles and permissions
- ✓ Discuss ESXi host access and authentication
- ✓ Integrate ESXi with Active Directory

Resource Management and Monitoring

- ✓ Introduce virtual CPU and memory concepts
- ✓ Describe methods for optimizing CPU and memory usage
- ✓ Configure and manage resource pools
- ✓ Use vCenter Server performance graphs and alarms to monitor resource usage

High Availability and Fault Tolerance

- ✓ Explain the vSphere HA architecture
- ✓ Configure and manage a vSphere HA cluster
- ✓ Set vSphere HA advanced parameters
- ✓ Enable vSphere FT on a virtual machine
- ✓ Describe VMware vSphere Replication

Network Scalability

- ✓ Create, configure, and manage vSphere distributed switches, network connections, and port groups
- ✓ Discuss distributed switch features, such as private VLANs, discovery protocols, VMware vSphere Network I/O Control, NetFlow, and port mirroring
- ✓ Host Scalability Use host profiles to manage ESXi configuration compliance
- ✓ Configure and manage a VMware vSphere Distributed Resource Scheduler cluster
- ✓ Configure Enhanced vMotion Compatibility
- ✓ Use vSphere HA and vSphere DRS together

Storage Scalability

- ✓ Describe VMware vSphere Storage APIs - Array Integration and Storage Awareness
- ✓ Explain policy-driven storage
- ✓ Add a storage policy to a virtual machine storage profile
- ✓ Introduce VMware vSphere Storage I/O Control
- ✓ Create a datastore cluster
- ✓ Configure Storage DRS

Patch Management

- ✓ Use vSphere Update Manager to manage ESXi patching
- ✓ Install vSphere Update Manager and the vSphere Update Manager plug-in
- ✓ Create patch baselines
- ✓ Scan and remediate hosts

VMware Management Resources

- ✓ VMware Management Resources Describe vSphere Management Assistant
- ✓ Configure vSphere Management Assistant
- ✓ Discuss the VMware vSphere Command-Line Interface command set
- ✓ Perform command-line operations for host management, network management, storage management, and performance monitoring

Installing VMware Components

- ✓ Describe vCenter Linked Mode to manage multiple vCenter Server inventories
- ✓ Introduce ESXi installation
- ✓ Describe boot-from-SAN requirements
- ✓ Describe vCenter Server hardware, software, and database requirements
- ✓ Install vCenter Server (Windows-based)

Host and Management Scalability

- ✓ Configure and manage VMware vSphere Distributed Power Management
- ✓ Use VMware vSphere PowerCLI
- ✓ Use vSphere ESXi Image Builder CLIt to create an ESXi installation image
- ✓ Use vSphere Auto Deploy to deploy a stateless ESXi host

JCGRACOMM